



COUNTY OF STEARNS

Department of Highways

PO Box 246 • St Cloud, MN 56302

(320) 255-6180 • FAX (320) 255-6186

CHRISTOPHER R. BYRD, P.E.
Highway Engineer

MICHAEL DECKER, P.E.
Asst. Highway Engineer

MATT ZINNIEL
Maintenance Superintendent

Date: April 25, 2026
To: Residents Adjacent to County State Aid Highway 44
Located between CSAH 46 and CR 143
RE: Reinstallation of Mailboxes

The resurfacing on the above referenced project may necessitate a new swing away style mailbox support if you presently have a mailbox. If you have an existing swing away support, it will be determined if it needs replacement. The new support will be installed 5" higher to accommodate the resurfacing of the road. To minimize the need of coordination of their removal with you, the owner, the county maintenance forces will install your new support prior to construction. Construction is expected to be approximately May-July but can vary based on contractor's schedule.

After this it will be your responsibility to fasten your mailbox onto the new support within one week. After one week our county maintenance forces will then remove your old support and it becomes your property to dispose of as you wish. Failure to transfer your mailbox to the new support will result in undeliverable mail. These procedures are a policy adopted by resolution through the Stearns County Board of Commissioners and a copy is provided for your reference. It should be noted that the support unit shall become your property and thus future maintenance and repairs will be at the owner's expense. It is our goal that the mounting procedures will facilitate easy access by the mail carrier, provide a safer support for vehicles, and yet permit efficient snow removal by maintenance forces.

If you have an existing concrete driveway, the concrete will be removed approximately to the right of way line and replaced with bituminous to allow for the change in slope due to raising of the road.

Thank you for your attention to this matter. If you have any further questions, please feel free to contact this office between the hours of 7:30 a.m. to 4:00 p.m.

Sincerely,

Christopher R. Byrd, P.E.
Stearns County Engineer

RESOLUTION

WHEREAS, Minnesota Statutes, Section 169.072, passed in 1994, declare certain mailbox supports to be a public hazard and authorizes local road authorities to remove these mailbox supports and replace them, and

WHEREAS, Stearns County recognizes that replacing all hazardous mailbox supports along Stearns County highways at the same time would be a fiscal burden, and

WHEREAS, replacement mailbox supports shall be in conformance with the provisions of Chapter 8818, of the Minnesota Rules, and

WHEREAS, mailboxes are the property owner(s) responsibility and must conform with U.S. Postal Service requirements.

THEREFORE, BE IT RESOLVED, Stearns County will provide and install at the County's expense conforming mailbox supports within the limits of all Stearns County highway reconstruction and highway resurfacing projects.

BE IT FURTHER RESOLVED that in all circumstances, the mailbox support shall be the property of the property owner upon completion of installation and any further repair or replacement will be at the owner(s) expense.

Adopted by the Stearns County Board of County Commissioners this 21st day of February, 1995.

ATTEST: Henry J. Kohorst
Henry J. Kohorst

Rose Arnold
Rose Arnold
Chair of the Board of
County Commissioners

CERTIFICATION

I hereby certify that the above is a true and correct copy of a resolution duly passed, adopted, and approved by the County Board of Commissioners of said county on the 21st day of February, 1995.

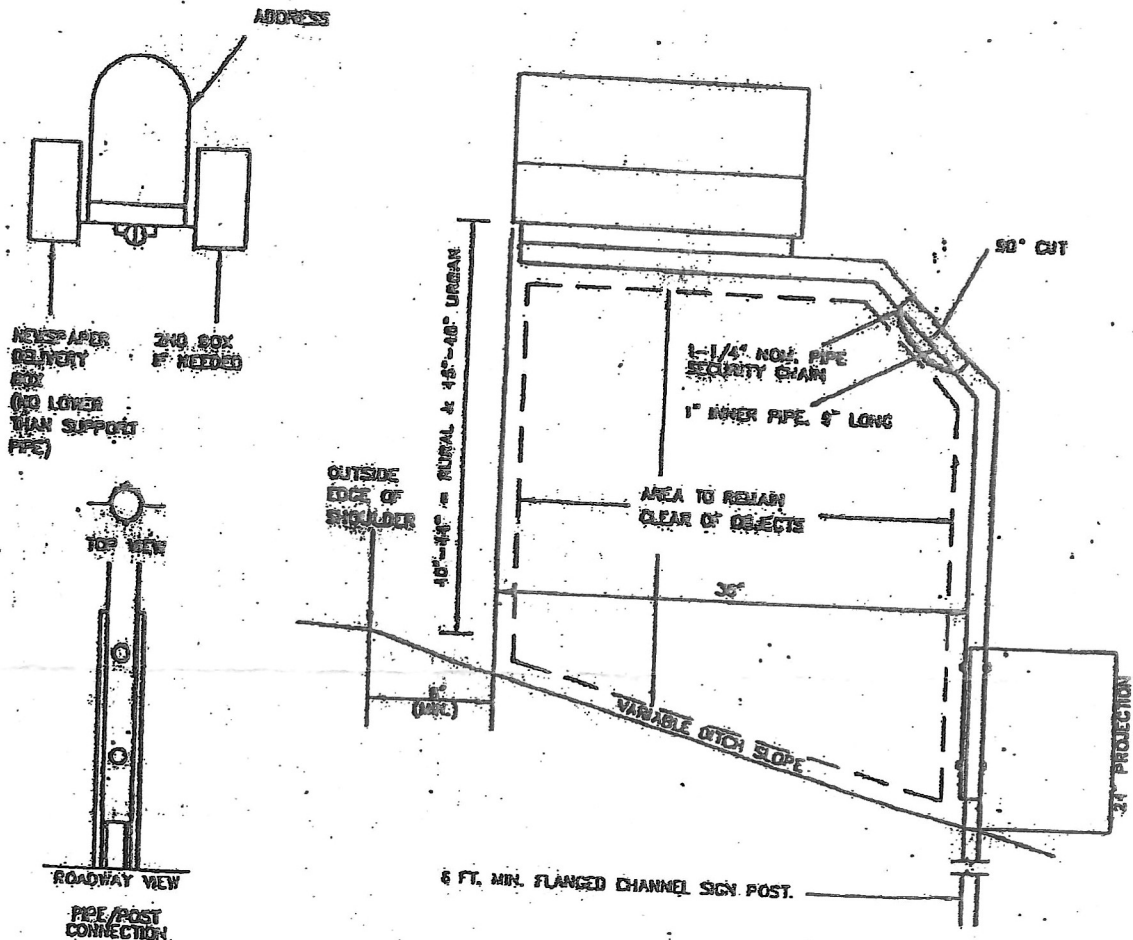
(SEAL)

Henry J. Kohorst
Henry J. Kohorst
County Auditor

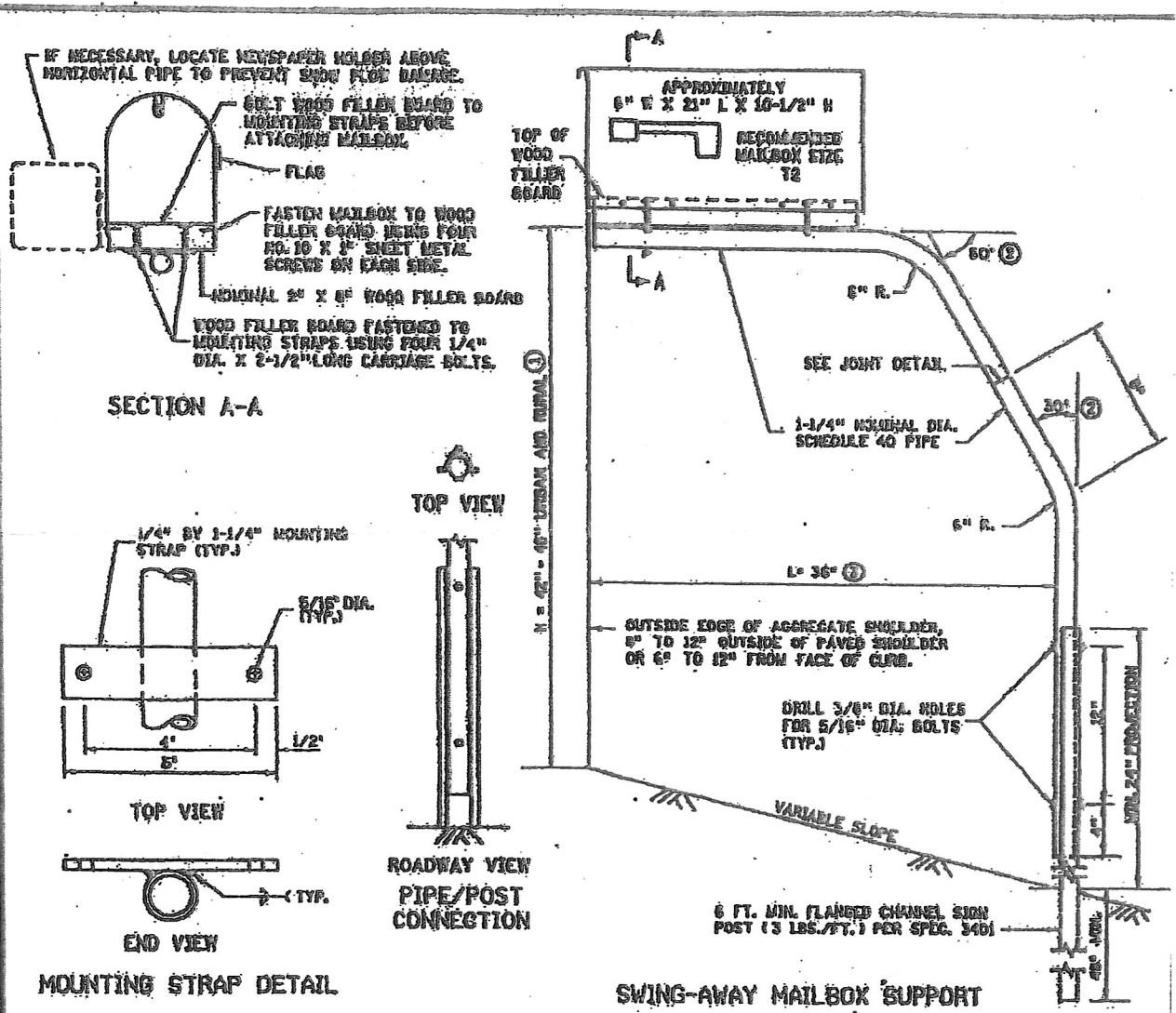
COUNTY OF STEARNS

Department of Highways
PO Box 246 • St Cloud, MN 56302
(320) 255-6180 • FAX (320) 255-6186

MAIL BOX SUPPORT DETAIL SWING AWAY STYLE

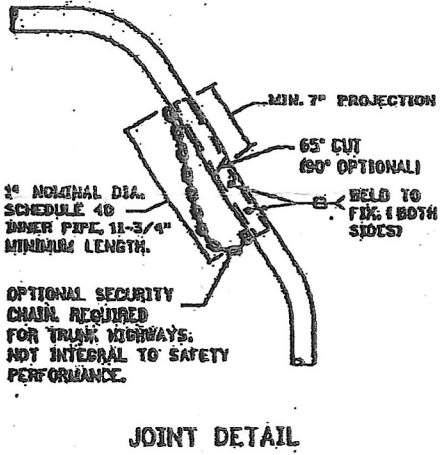


NOTES:
CONTACT GOPHER STATE ONE CALL 48 HOURS PRIOR TO INSTALLATION FOR
LOCATING UNDERGROUND UTILITIES CALL 1-800-252-1166
ADJACENT SUPPORTS TO BE INSTALLED NO CLOSER THAN 30 INCHES



MOUNTING STRAP DETAIL


SWING-AWAY MAILBOX SUPPORT



JOINT DETAIL

NOTES:
 MAILBOX LOCATIONS SHOULD BE STAKED BEFORE INSTALLATION FOR PROPER HEIGHT AND DISTANCE FROM THE ROADWAY. ONCE STAKED, THE INSTALLER MUST NOTIFY THE ENGINEER AND THE POST OFFICE. THE ENGINEER AND THE POSTMASTER SHALL APPROVE THE STAKED LOCATIONS PRIOR TO FINAL INSTALLATION.
 THE NOMINAL SPACING (CENTER TO CENTER) BETWEEN MULTIPLE MAILBOX SUPPORTS SHALL BE EQUAL TO THE HEIGHT OF THE MAILBOX SUPPORT.
 OTHER MAILBOX SUPPORT DESIGNS MAY BE USED IF THEY SATISFY NCHRP REPORT 350 CRITERIA IN ACCORDANCE WITH FHWA ACCEPTANCE LETTER, MEET MINNESOTA RULES 8010 AND U.S. POST OFFICE RECOMMENDATIONS AND ARE IN COMPLIANCE WITH MNDOT REQUIREMENTS WHICH MAY INCLUDE THE FOLLOWING (REQUIRED ON TRUNK HIGHWAYS):
 PIPE SHALL CONFORM TO SPEC. 3562, SCHEDULE 40 OF ASTM A53/ASSA.
 ALL FASTENERS SHALL CONFORM TO SPEC. 3391.
 PIPES, POST AND OTHER STEEL COMPONENTS SHALL BE GALVANIZED PER SPEC. 3392.
 THE CONTRACTOR SHALL SEND THE SHOP DRAWINGS TO THE ENGINEER FOR APPROVAL. FOR QUESTIONS REGARDING DESIGN ELEMENTS AND BREAKAWAY FEATURES, CONTACT THE DESIGN STANDARDS UNIT.

① ANY CHANGE IN HEIGHT (H) MUST BE APPROVED BY LOCAL POSTMASTER.
 ② 45° BENDS MAY BE USED AS AN OPTION.
 ③ A 40° OR 55° CANTILEVER LENGTH (L) MAY BE USED AS AN OPTION FOR NON-TRUNK HIGHWAY USE.

APPROVED JUNE 1, 2007

 STATE DESIGN ENGINEER

STATE OF MINNESOTA
 DEPARTMENT OF TRANSPORTATION
MAILBOX SUPPORT
 SWING-AWAY TYPE

SPECIFICATION REFERENCE	STANDARD PLATE NO.
3562	9350A
3391	
3392	
3401	